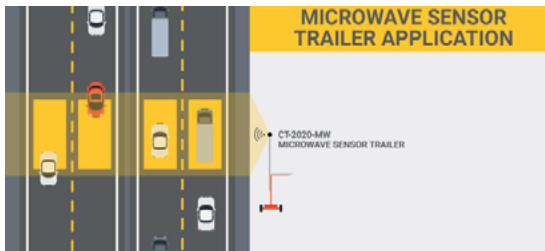




# MICROWAVE SENSOR TRAILER

The CT-2020-MW comes with a side-fire microwave sensor that provides bi-directional lane data, perlane volume, speed - 85th percentile, occupancy and classification information in up to 16 userdefined detection zones. The CT-2020-MW also comes with a high-speed modem with GPS which allows to gather data remotely using our JamLogic<sup>®</sup> Software. The CT-2020-MW is the perfect Equipment to integrate to your smart work zone project or for your traffic studies.



## FEATURES & BENEFITS

### 20 FT SENSOR HEIGHT

Retractable mast for easy transport

### FIXED SOLAR PANELS

Allows for battery recharging and system autonomy

### ENVIRONMENTALLY FRIENDLY

No generator, noise and pollution

### COMPACT DESIGN

Deploy in 10 minutes and is easy to tow and store thanks to its removable tongue

### WIRELESS COMMUNICATION\*

Remote equipment health monitoring with a high-speed 4G LTE modem\*, remote data retrieval and optional text/email alerts using our Jamlogic software

### STEALTH TECHNOLOGY

Maintenance-free batteries  
Anti-theft hidden battery compartment

## APPLICATIONS

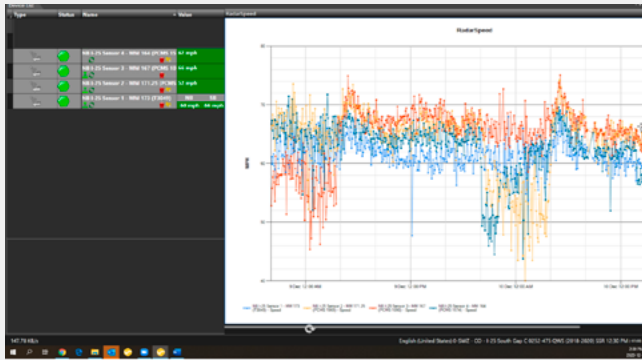
- Smart work zones
- Outdoor special events
- Traffic studies

# OTHERS FEATURES

## JAMLOGIC® SOFTWARE

CT-2020-MW comes with Ver-Mac's high-speed 4G LTE modem with GPS to maximize your productivity, efficiency and profitability – all remotely from your office or home!

- Get an Interactive list of your equipment and map view
- View speed data on a single screen
- Generate speed data graphs (export to Excel)
- Get communication status and battery voltages
- Integrate with PCMS and cameras



## HIGH-QUALITY CONSTRUCTION

### POWDER COATING SUPERIOR FINISH

Impact, humidity, salt spray and rust resistant

### 4 AJUSTABLE SWIVEL JACKS

For stabilization, sensor leveling and easy transportation

### MANUAL LIFT MECHANISM

For quick deployment



Travel/storage position

# SPECIFICATIONS

## DIMENSIONS & WEIGHTS

- Overall length: 132 <sup>17</sup>/<sub>32</sub> in. (3366 mm)
- Operating width: 70 <sup>3</sup>/<sub>8</sub> in. (1787 mm)
- Operating height: 240 in. (6096 mm)
- Traveling height: 92 <sup>1</sup>/<sub>2</sub> in. (2350 mm)
- Traveling width: 70 <sup>3</sup>/<sub>8</sub> in. (1787 mm)
- Axle/suspension (approx.): 2000 lb (910 kg)
- Weight (approx.): 820 lb (370 kg)

## GENERAL SPECIFICATIONS

- 1 solar panel of 130 watts

## WARRANTY

- 1 year on complete unit
- 2 years on electronic components manufactured by Ver-Mac

